



# VACULEX TP, VL & ML

Ergonomic, efficient and user-friendly vacuum lifting equipment



Our vacuum tube lifters are designed for lifts between 5 and 250kg [10 and 550 lbs]. They are simple to install, very easy to use and can be adapted to lift virtually any object.

### **Good ergonomics is good economics**

Repeated lifts do not have to be heavy to be both dangerous and costly. Most often, vacuum tube lifters lead to an increased work rate and better productivity. Costs for extended periods of sick leave are reduced and rehabilitation periods are avoided. Our tube lifters minimize that type of problem and also reduce the risk of accidents that can injure the user as well as damage the goods.

### **Lift almost anything**

With a vacuum tube lifter you can lift boxes, sacks, drums, sheet metal, computers, crates, kegs & barrels, TVs and much more – depending on equipment and accessories. The design consists of a pump, vacuum hose, lift tube, control unit and finally a suction foot or a gripping tool which is adapted to your needs.

### **Very easy to use**

A vacuum tube lifter uses vacuum to grab hold of and lift the load in a single action; the controls are very easy to use and the vacuum tube lifter gently follows your own body movements, as if the lifted object were weightless. With a bottom swivel or an angle adaptor you can rotate or turn the lifted object any way you like, for instance in assembly work.

#### **Vaculex VL as a lifting tool in window production**

Lifting vertical glass panes for placement in horizontal window frames. Here, the panes are turned 90 degrees using an angle adaptor.



## Unique safety

Since the suction foot is always dimensioned in accordance with the vacuum lift tube, you don't risk dropping lifted objects that are too heavy. If the weight is too much, the tube lift will simply not lift it. This reduces the risk of personal injury and damaged goods. If the vacuum pump should stop, the pressure is retained so that the load can be lowered in a controlled manner. Vaculex VL is always fitted with our patented protection valve.

## Easy to install and service

The power source can either be an electric or pneumatic vacuum pump. The system is normally installed in a jib or bridge crane, such as our light profile system, AluRail. The installation is simple and is adapted to your particular lifting needs. The vacuum tube lifters are made of extremely hard-wearing parts which seldom require service and repair.

## Can you predict the risk of injuries?

"Musculoskeletal disorders (MSD) cover a broad range of health problems. The main groups are back pain/injuries and Work Related Upper Limb Disorders, commonly known as "repetitive strain injuries". Lower limbs can also be affected.

Lifting, poor posture and repetitive movements are among the causes. Some types of disorders are associated with particular tasks or occupations.

MSD are commonly reported work related health problem by European workers: 30% complain of backache; 17% complain of muscular pains in their arms and legs; 45% report working in painful or tiring positions; 33% are required to handle heavy loads in their work."

- European Agency for Safety and Health at Work

## Vaculex VL as a lifting tool at a bakery

Lifting sacks of wheat from pallet to mixer.



## Vaculex ML as a lifting tool in engineering industry

Lifting plastic crates with customized fork tool. The crate is turned over and emptied using a ball-bearing fitted swivel.



## Vaculex ML as a lifting tool at a foundry

Lifting metal ingots from conveyor belt to pallet. The suction foot has no problem holding against the uneven surface of the metal, thanks to a special sealing gasket.



## Vaculex TP, a lifting tool in a distribution center

Express parcel handling and stacking boxes on pallets



## Vaculex VL as a lifting tool in the auto industry

Handling of air pressure chamber for brake system in busses. Curved suction foot matches the radius of the chamber.



# Vaculex TP, VL & ML

**Vaculex VL** is our most heavy-duty vacuum tube lifter – a strong, versatile and user-friendly model for use with two hands and for lifts between 5 and 250kg [10 and 550 lbs].

Vaculex VL is available in six lift tube sizes, between 100 mm and 200 mm, with five different vacuum pumps and many accessories and suction feet for a virtually infinite number of combinations. Normally, Vaculex VL is driven by an electric vacuum pump for best performance and flexibility but we can also provide pneumatic vacuum pumps if required.

**Vaculex ML** is a small, handy model, very easy to use because it can be operated with one hand. For loads between 5 and 30 kg [10 and 66 lbs].

With a pneumatic vacuum pump the unit is very easy to install, since the pump is mounted on the top swivel. A number of electric vacuum pumps are available, if required.

**Vaculex TP** is an ergonomic, flexible lifting solution to reduce manual handling for any load up to 65kg [140 lbs].

Its user friendly design and functionality increases productivity and reduces the risk of injuries. Thanks to the 360° joint the flexibility makes it ideal for any type of parcel handling, but also in airports, distributions centers and much more.

Vaculex ML



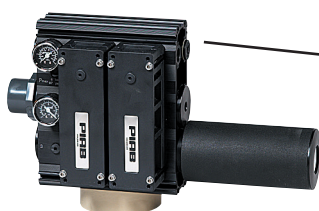
Vaculex VL



Vaculex TP



**Control unit with sound insulation and ergonomic handles**  
 Vaculex ML and TP is one-hand operated and Vaculex VL is two-hand operated.



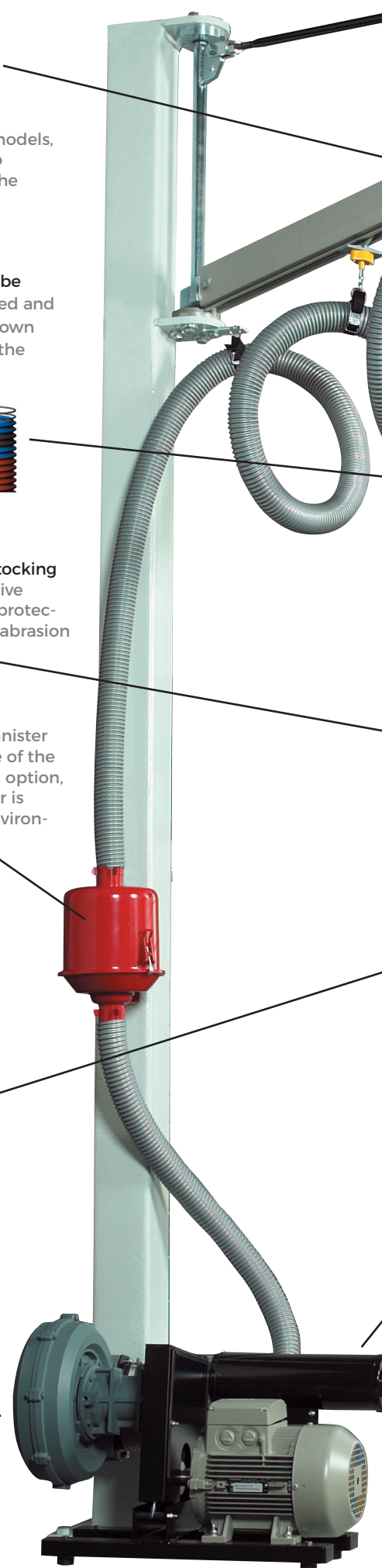
**Suspension eye**  
 Available in various models, to suit most of the jib or bridge cranes on the market.

**Highest quality lift tube**  
 Our lift tubes, designed and manufactured to our own specifications, are of the highest quality. Long lasting and therefore supplied with a one year warranty.

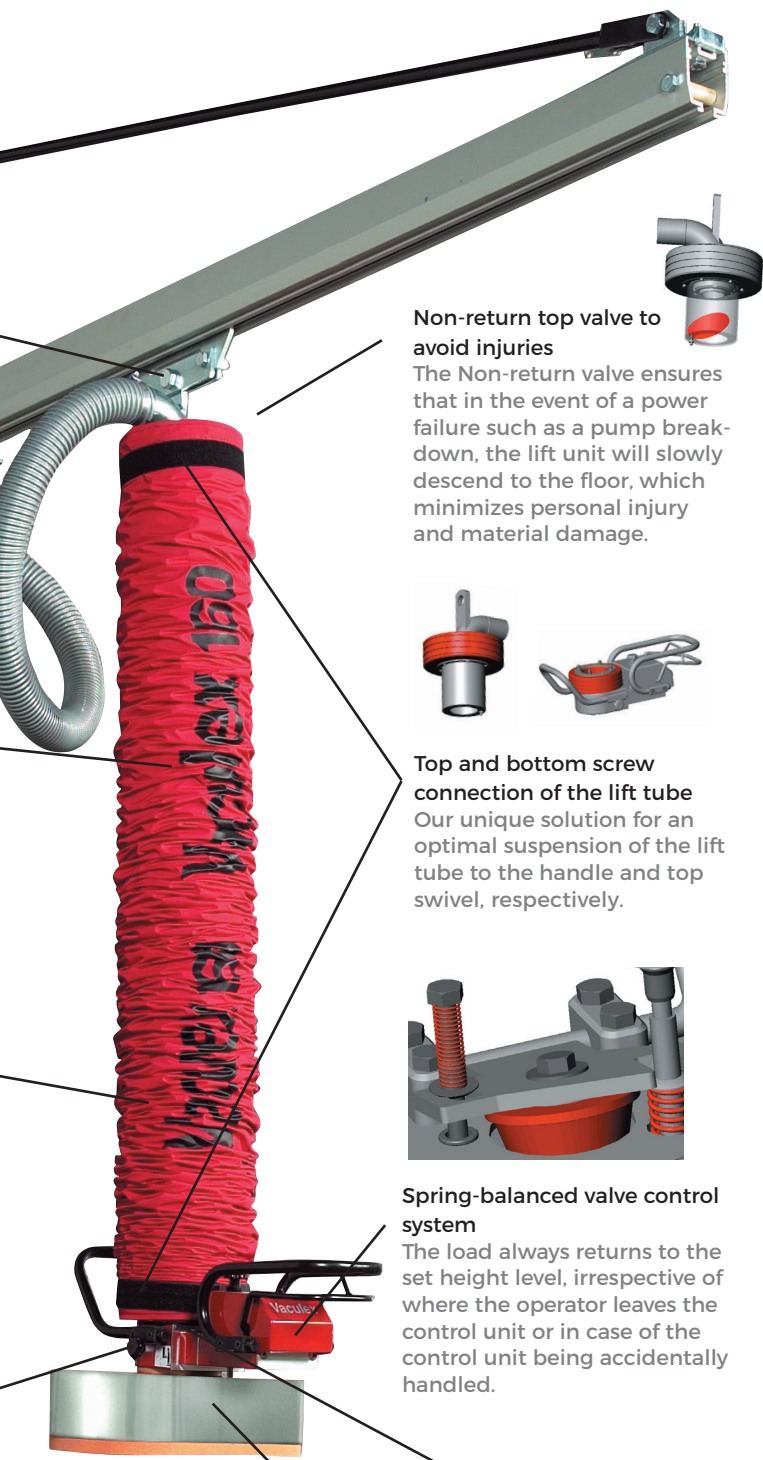


**Effective protective stocking**  
 Our standard protective stocking is excellent protection against external abrasion of the lift tube.

**Efficient air filter**  
 Our standard filter canister increases the lifetime of the vacuum pump. As an option, an extra large air filter is available for dusty environments.







## Life of the units

Vaculex VL, ML & TP are basically impossible to wear out. We always offer a one year guarantee on all parts, including lift tube, except for wearing parts such as rubber sealing gaskets, filter inserts, drive belt for pump etc.

## Safety

User safety is a key issue for us. For instance, we have a patented separate protection valve for fixed tools such as hooks or scissor grips. The valve prevents the lift from moving upward at high speed. Instead it stops almost immediately if the load breaks or is inadvertently released.

## Modular system for a secure investment

The tube lifters are based on a modular system for maximum flexibility and a secure investment. For instance, the lift tube can be changed depending on required lifting capacity. With the Vaculex VL you can also change between an extended control unit and a short, normal one. Our approach is to deliver turnkey solutions, contributing to a safer and more healthy workplace.

## High-demand environments

We have adapted our lift units to function in the most varied environments. They are available in acidproof versions in class A4 for chemical, food or pharmaceutical industry. For work in explosive environments we have specially-adapted vacuum pumps or as an alternative we also offer a pneumatic vacuum pump.

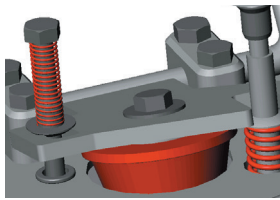
### Non-return top valve to avoid injuries

The Non-return valve ensures that in the event of a power failure such as a pump breakdown, the lift unit will slowly descend to the floor, which minimizes personal injury and material damage.



### Top and bottom screw connection of the lift tube

Our unique solution for an optimal suspension of the lift tube to the handle and top swivel, respectively.



### Spring-balanced valve control system

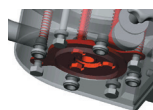
The load always returns to the set height level, irrespective of where the operator leaves the control unit or in case of the control unit being accidentally handled.

### Vacuum pump - electric or pneumatic

Various sizes of electric or pneumatic vacuum pumps are available. Vaculex ML is equipped with a top swivel integrated ejector pump. All vacuum pumps are equipped with an efficient silencer as standard. The electric vacuum pumps for Vaculex ML are equipped with a sound reduction box as standard. Available as an option for Vaculex VL electric pumps.

### Suction foot with optimal safety

The tube lifters do not drop a load that they can lift and the lift tube will not lift if the load is too heavy. All standard suction feet are size-adapted to the lift tube that is being used, with a safety factor of at least 2.5. This means that the goods are attached to the foot with a suction force 2.5 times greater than the lifting capacity of the lift tube.



### Bottom protection valve for optimal safety

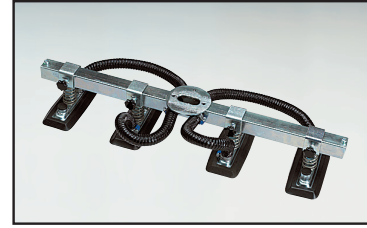
In case a load should break, the valve in the bottom of the vacuum head minimizes the risk of injury or damage, by opening instantaneously and thus decreasing the lifting force to a minimum.



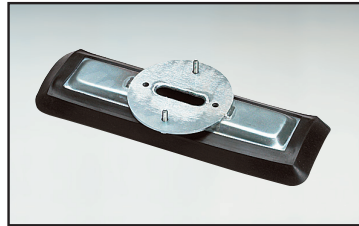
# Accessories TP, VL & ML



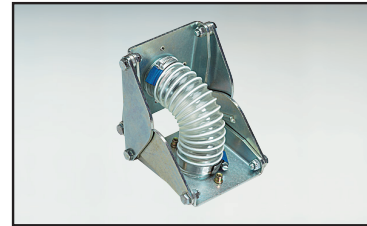
Yoke foot with two adjustable feet. Suitable for cardboard boxes with divided lid, materials in sheet form, etc. A large range available.



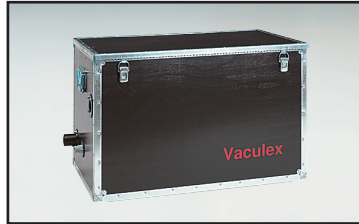
Yoke foot with four adjustable feet. Suitable for long, thin materials like steel sheets, board sheets etc. A large range available.



Curved suction foot. For lifting tubular frames, axles, drums etc. Available in customized sizes.



Angle adaptor. Suitable for moving, for instance, sheet metal from a horizontal to a vertical position or vice versa.



Sound reduction box. Available for all electric pump sizes.



Large dust filter. Useful in dusty environments.

## Accessories

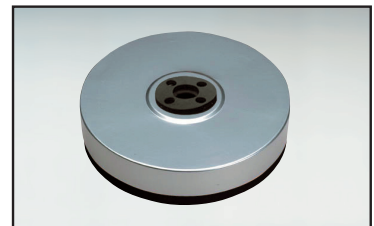
Vaculex lifters have a large selection of standard accessories, which allows us to customize an appropriate solution to the most varied requirements. Since our systems are modular, it is also easy to make additional modifications at a later stage.

## Suction Feet

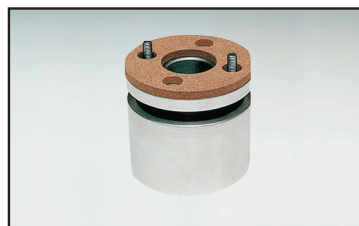
The suction foot is one of the most important part of the complete solution. We have a large number of different suction feet to suit most types of materials. If a standard suction foot is not suitable, we can always offer a customized solution.



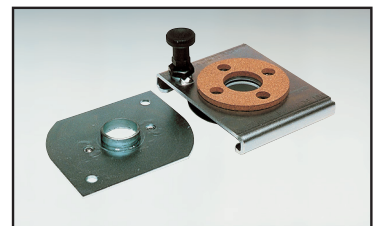
Yoke foot with two adjustable feet. Suitable for cardboard boxes with divided lid, sheets etc. A large range available.



Round suction foot. Suitable for handling cans, drums, stones, bricks etc. Several diameters available.

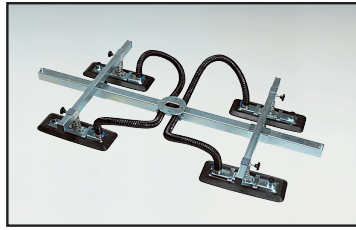


Bottom Swivel. To rotate the goods 360° while keeping the control unit in a fixed position. Useful when placing cartons in a certain pattern on a pallet etc.

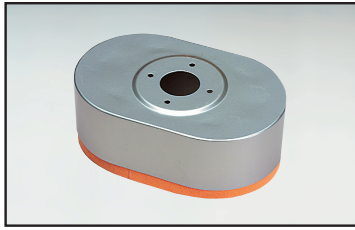


Quick disconnection. Bayonet joint type. Upper and lower part. For fast and simple change of suction feet/tools.





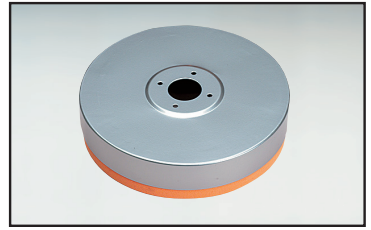
Cross yoke foot, (H-shaped), with four adjustable feet. Suitable for large steel sheets, board sheets etc. A large range available.



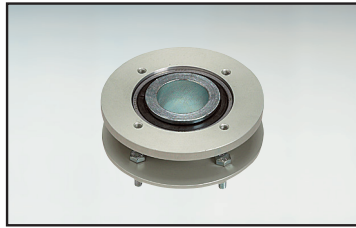
Oval suction foot. Principally for handling sacks but also suitable for plastic shrink-wrapped goods. Available in several sizes.



Rectangular suction foot. For handling goods with sealed surfaces such as cardboard, sheet metal, plate, etc. Many sizes available.



Round suction foot. Suitable for handling cans, drums, stones, bricks etc. Several diameters available.



Bottom Swivel. To rotate the goods 360° while keeping the control unit in a fixed position. Suitable when placing boxes in a certain pattern on a pallet.



Quick disconnections. Bayonet joint type. Upper and lower part. For fast and simple change of suction feet/tools.



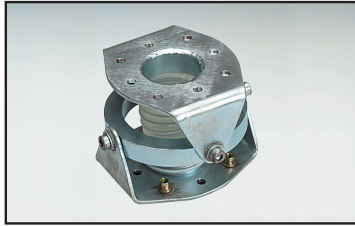
Flexible extended control unit. Useful when stacking goods high up on a pallet etc. Available in various lengths.



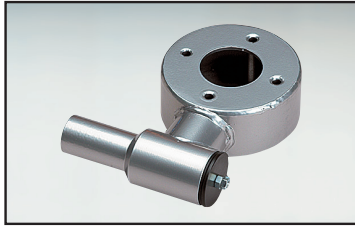
Rigid extended control unit. Useful when handling wide goods. Available in various lengths.



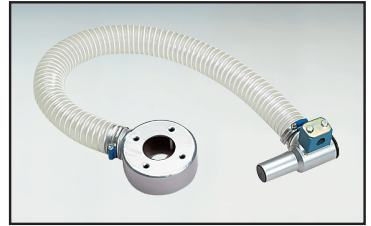
Protection valve. For safe lifts using fixed hooks/tools. Fitted between the lift tube and the vacuum head. Immediately eliminates the de-pression inside the lift tube, if the load is released inadvertently.



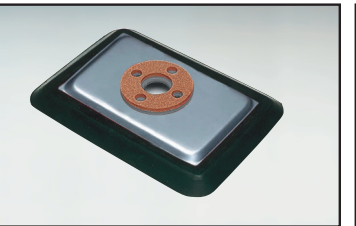
Universal joint. Fitted in between the lift tube and the vacuum head. Keeps the lift tube in a vertical position if load becomes unbalanced.



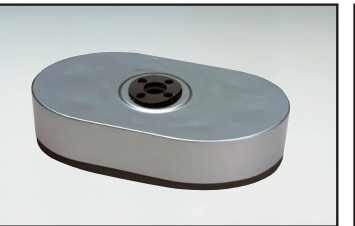
Release valve for standard control unit. Facilitates load releasing when large suction feet are used, for instance during vertical handling.



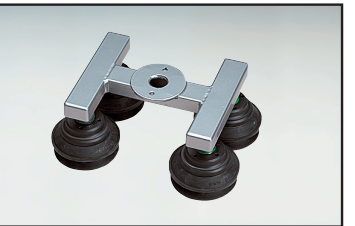
Release valve for extended control unit. Facilitates load releasing when large suction feet are used, for instance during vertical handling.



Rectangular suction foot. For handling goods with sealed surfaces such as cardboard sheet metal, plate etc. Many sizes available.



Oval suction foot. Principally for handling sacks but also useful for plastic shrink-wrapped goods. Available in several sizes.



Fixed yoke suction foot with bellow cups. Useful for rough surfaces or on surfaces with differences in levels. Various models available.



Angle adaptor. Suitable for moving, for instance, sheet metal from a vertical to a horizontal position or vice versa.



Protective valve. For safe lifts using fixed hooks/tools. Fitted between the lift tube and the vacuum box. Immediately eliminates the depression inside the lift tube if the load is released inadvertently.



Flexible extended control unit. Useful when stacking goods high up on a pallet etc. Available in various lengths.



Rigid extended control unit. Useful when handling wide goods. Available in various lengths.



Release valve. Facilitates load releasing when large suction feet are used, for instance during vertical lifts. Available for standard as well as extended control unit.



## 30 YEARS OF EXPERIENCE

Vaculex develops and manufactures lifting equipment based on vacuum technology for industries with high demands on ergonomics, safety and efficiency.

With Swedish design, top quality, flexible solutions and 30 years of experience we are a world-leading manufacturer of lifting equipment.

Worldwide, we deliver solutions with focus on working with ease – before, during and after your purchase.



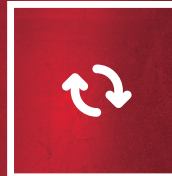
## ERGONOMIC

Vaculex provides ergonomic solutions to the high injury risks associated with manual handling. The load on the body can be reduced more than 80%, by using Vaculex. Good ergonomics means good economics.



## ECONOMIC

Long lasting and safe solutions that gives you benefits in terms of reduced sick leave, lower staff turnover and better staff utilization – combined with higher productivity.



## EFFICIENT

Vaculex not only makes life easier for the handler; several studies also show increased productivity. Our products are developed using the latest technology in cooperation with the industry and end users' demands.



## END-USER HAPPINESS

Lighter work and reduced strain injuries contribute to a happier team. Vaculex not only makes life easier for the user. Benefits extend to all stakeholders in your production process.

### BRAZIL

Piab do Brasil Produtos para Vácuo Ltda  
Phone: +55 11 4492 9050  
info-brasil@piab.com

### CHINA

Piab Shanghai Co., Ltd  
Phone: +86 21 5237 6545  
info-cn@piab.com

### FRANCE

Piab SAS  
Phone: +33 1 64 30 82 67  
info-france@piab.com

### GERMANY

Piab Vakuum GmbH  
Vaculex GmbH (Piab group)  
Phone: +49 (6033) 7960-0  
info-germany@piab.com

### INDIA

Piab Vacuum Technology Pvt. Ltd.  
Phone: +91 44 25 36 48  
+91 44 2656 3248  
info-india@piab.com

### ITALY

Kenos Srl. (Piab Group)  
Phone: +39 049 8741384  
Piab Italia Srl.  
Phone: +39 011 226 36 66  
info-italy@piab.com

### JAPAN

Piab Japan Ltd  
Phone: +81 3 6662 8118  
info-japan@piab.com  
VIET NAM  
CÔNG TY TNHH CÔNG NGHỆ HOÀNG LONG  
468 Lê Hồng Phong, P.1, Q.10, Tp. HCM  
Hotline: 0907.686.889  
info@congnghehoanglong.com  
www.congnghehoanglong.com

### MEXICO

Phone +1781 337 7309  
info-mxca@piab.com

### POLAND

Piab Polska Sp. z o.o.  
Phone: +48 58 785 08 50  
info-poland@piab.com

### SINGAPORE

Piab Asia Pte Ltd  
Phone: +65 6455 7006  
info-singapore@piab.com

### SPAIN

Vacio Piab, S.L.  
Phone: +34 93 6333876  
info-spain@piab.com

### SWEDEN

Piab AB, HQ  
Phone: +46 (0)8 630 25 00  
Vaculex AB (Piab group)  
Phone: +46(0)31 67 01 00  
info@vaculex.com

### UNITED KINGDOM

Piab Ltd  
Phone: +44 (0)1509 857 010  
Vaculex UK Ltd (Piab group)  
Phone: +44 121 359 3000  
info-uk@piab.com

### USA

Piab USA, Inc.  
Phone: +1 (800) 321 7422  
Vaculex USA LLC (Piab group)  
Phone: +1 704 527 5052  
info-usa@piab.com