



AIO - Plug-In IPC tablet tester with NEW scale generation

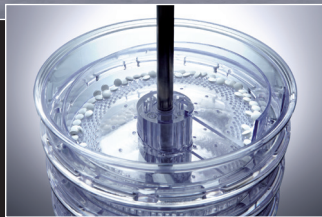


AIO PT - stainless steel segmentable deduster with metal check and tablet tester

## Advance by Technology ...

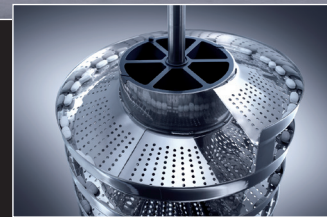
Sophisticated engineering leads to unreached flexibility, and efficient performance. Our customers' process demand solutions beyond the tablet press. Therefore our company offers peripheral devices as integrated solutions, which provides great customer efficiency advantages. As always, this new AIO generation of vertical dedusters polymer or stainless steel has been developed to achieve the highest possible flexibility, in conjunction with superior figures for output and quality of dedusting. Metal check and IPC tablet control tester are available. That new concept allows to increase the performance of your tableting machine, directly monitoring and controlling manufacturing with less operator supervision need. This will warranty a 100% control of your manufacturing. Tester can be installed without any cable on the unit with a Plug-In concept. This dust tight tester contains a new scale generation that eliminates most of the manufacturing interference.

Hi-Tec FDA pharmaceutical polymer spiral



FDA polymer segments

Hi-Tec segmentable 316L Stainless steel spiral



Stainless steel segments

Advantages

- Excellent dedusting-deburring performances - air pulsing & powder extraction technology
- Compactness of the unit - One unique system including deduster, metal check and tablet tester
- Noise - very low noise emission < 70 dBa
- Vibration effect cancellation - no vibration transmitted to accessories (metal check & tester)
- Emptying - full tablet emptying & no tablet trapped in the system due to sophisticated design
- No cable & pipe on the floor - One central «Plug-in» connectivity including all the utilities
- Dust tight - easy Flex Connect connectivity
- Fast product change-over - exchangeable deduster module, possibility to wash the EDM off line



Metal check emulation Cella



Metal check emulation Lock



Standard dust tight connectivity



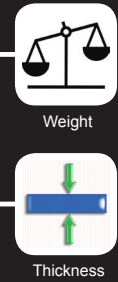
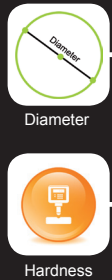
Central utilities connectivity



Standard dust tight connectivity



Dust tight connectivity



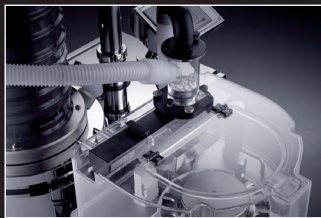
Fully compatible results with UTS & Checkmaster devices

The AIO provided through tablet press manufacturer can be integrated in the HMI of the production machine :

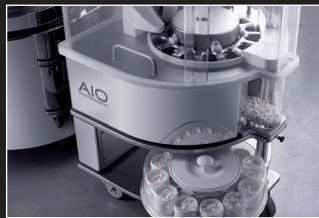
→ This allows to regulate automatically the tablet press

The AIO Provided as stand-alone unit can release datas, statistics, T1 & T2 alarms, and/or stop the press through the AIO HMI :

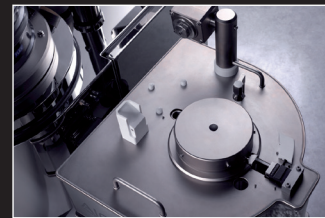
→ This allows the operator to adjust tablet press accordingly



Dust tight tablets sampling



12 stations tablets collector



Easy cleaning and calibration

## The AIO Tablet Testing System

The flexible and modular Tablet Testing System AIO measures the weight, thickness, diameter and hardness of tablets, oblong tablets, capsules and similar products fully automatically and offers the following features and benefits:

- Dust tight industrial design
- New weighcell - less sensitive to the production environment
- Plug and Play tester on the AIO deduster - No cable
- Fully automatic operation or Manual mode
- Reliable and quick measurement
- Can control your production with or without tablet press HMI
- Tablet samples transfer by vacuum - no dust in the tester
- Innovative solutions for tablet handling and orientation
- Easy cleaning / Validation / Calibration

Round, oval, square and rectangular shapes can be tested. For oval shaped tablets, the proven Oblong Centering System can be adapted, this option is also retrofittable.



Weight control

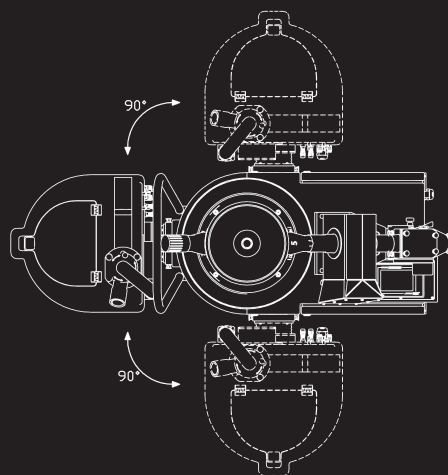
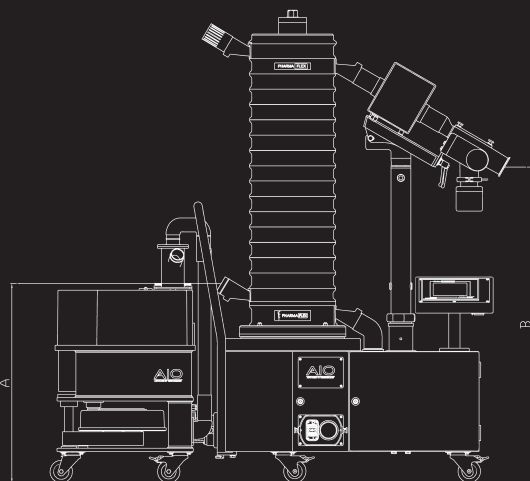


Hardness control



Thickness control

| Tablet tester | Measuring unit                      | Measuring range                    | Measuring accuracy |
|---------------|-------------------------------------|------------------------------------|--------------------|
| Weight        | 1 mg / 0,5 mg / 0,1 mg (adjustable) | 10 mg to 50 g                      | +/- 1 mg           |
| Thickness     | mm or inch                          | 1-17 mm                            | +/- 0,05 mm        |
| Hardness      | N, Kp, or Sc                        | 4-400N (optional 800N)             | +/- 1 N            |
| Diameter      | mm or inch                          | 1-18 mm (round) / 1-23 mm (oblong) | +/- 0,1 mm         |



| Technical Data                                  | 750  |              | 1000                                       |              | 1250                                       |              | 1500                                       |              |
|---|--|--------------|--|--------------|--|--------------|--|--------------|
| Inlet height PFC Polymer spiral (A)             | 705 mm                                     |              | 705 mm                                     |              | 705 mm                                     |              | 705 mm                                     |              |
| Outlet height PFC Polymer spiral (B) Ceia       | Inlet height (A) + 470 mm                  |              | Inlet height (A) + 745 mm                  |              | Inlet height (A) + 1020 mm                 |              | Inlet height (A) + 1295 mm                 |              |
| Outlet height PFC Polymer spiral (B) Lock       | Inlet height (A) + 495 mm                  |              | Inlet height (A) + 770 mm                  |              | Inlet height (A) + 1045 mm                 |              | Inlet height (A) + 1320 mm                 |              |
| Inlet height PTCi Stainless Steel (A)           | 705 mm                                     |              | 705 mm                                     |              | 705 mm                                     |              | 705 mm                                     |              |
| Outlet height PTCi Stainless Steel (B) Ceia     | Inlet height (A) + 510 mm                  |              | Inlet height (A) + 785 mm                  |              | Inlet height (A) + 1060 mm                 |              | Inlet height (A) + 1335 mm                 |              |
| Outlet height PTCi Stainless Steel (B) Lock     | Inlet height (A) + 535 mm                  |              | Inlet height (A) + 810 mm                  |              | Inlet height (A) + 1085 mm                 |              | Inlet height (A) + 1360 mm                 |              |
| Floor dimensions AIO                            | 580 mm x 975 mm                            |              | 580 mm x 975 mm                            |              | 580 mm x 975 mm                            |              | 580 mm x 975 mm                            |              |
| Optional Plug & Play tester floor dimension AIO | 580 mm x 515 mm                            |              | 580 mm x 515 mm                            |              | 580 mm x 515 mm                            |              | 580 mm x 515 mm                            |              |
| Inlet chute AIO                                 | Flex Connect ISO DN 50                     |              | Flex Connect ISO DN 50                     |              | Flex Connect ISO DN 50                     |              | Flex Connect ISO DN 50                     |              |
| Outlet chute AIO                                | ISO DN 50                                  |              | ISO DN 50                                  |              | ISO DN 50                                  |              | ISO DN 50                                  |              |
| Minimum product size                            | PTCi Ø 1,6 mm - PFC Ø 3 mm                 |              | PTCi Ø 1,6 mm - PFC Ø 3 mm                 |              | PTCi Ø 1,6 mm - PFC Ø 3 mm                 |              | PTCi Ø 1,6 mm - PFC Ø 3 mm                 |              |
| Maximum product size                            | PTCi & PFC Ø 25 mm                         |              | PTCi & PFC Ø 25 mm                         |              | PTCi & PFC Ø 25 mm                         |              | PTCi & PFC Ø 25 mm                         |              |
| Conveying adjustment                            | Frequency / Voltage                        |              | Frequency / Voltage                        |              | Frequency / Voltage                        |              | Frequency / Voltage                        |              |
| Self emptying                                   | Yes  |              | Yes  |              | Yes  |              | Yes  |              |
| Required vacuum                                 | 130 to 200 m3/h - 2000 Pa                  |              | 130 to 200 m3/h - 2000                     |              | 130 to 200 m3/h - 2000                     |              | 130 to 200 m3/h - 2000                     |              |
| Aspiration connection                           | TC ISO 1127 DN 50                          |              | TC ISO 1127 DN 50                          |              | TC ISO 1127 DN 50                          |              | TC ISO 1127 DN 50                          |              |
| requested compressed air                        | 80L/min - min. 3bar                        |              | 80L/min - min. 3bar                        |              | 80L/min - min. 3bar                        |              | 80L/min - min. 3bar                        |              |
| Compressed air connection                       | Pneumatic contact 4 mm x3                  |              | Pneumatic contact 4 mm x3                  |              | Pneumatic contact 4 mm x3                  |              | Pneumatic contact 4 mm x3                  |              |
| Noise level (without product)                   | 65 to 70 dbA                               |              | 65 to 70 dbA                               |              | 65 to 70 dbA                               |              | 65 to 70 dbA                               |              |
| Power supply                                    | 110 V - 230 V                              |              | 110 V - 230 V                              |              | 110 V - 230 V                              |              | 110 V - 230 V                              |              |
| Frequency                                       | 50 Hz or 60 Hz                             |              | 50 Hz or 60 Hz                             |              | 50 Hz or 60 Hz                             |              | 50 Hz or 60 Hz                             |              |
| FDA material                                    | "Stainless steel 316L, or Celanex 2404 MT" |              | "Stainless steel 316L, or Celanex 2404 MT" |              | "Stainless steel 316L, or Celanex 2404 MT" |              | "Stainless steel 316L, or Celanex 2404 MT" |              |
| FDA transparent material                        | Tritan MX 711                              |              | Tritan MX 711                              |              | Tritan MX 711                              |              | Tritan MX 711                              |              |
| Roughness                                       | Ra < 0,5 µm                                |              | Ra < 0,5 µm                                |              | Ra < 0,5 µm                                |              | Ra < 0,5 µm                                |              |
| Frame parts                                     | Stainless Steel 304                        |              | Stainless Steel 304                        |              | Stainless Steel 304                        |              | Stainless Steel 304                        |              |
| Frame finishing                                 | Mirror Polished                            |              | Mirror Polished                            |              | Mirror Polished                            |              | Mirror Polished                            |              |
| Frame mounted on wheels                         | Yes  |              | Yes  |              | Yes  |              | Yes  |              |
| IQ-OQ protocol                                  | Available                                  |              | Available                                  |              | Available                                  |              | Available                                  |              |
| Material certificates                           | Available                                  |              | Available                                  |              | Available                                  |              | Available                                  |              |
| Packing   | Box on 1 US palet                          |              | Box on 1 US palet                          |              | Box on 1 US palet                          |              | Box on 1 US palet                          |              |
| Net weight - AIO                                | 338  |              | 347  |              | 356  |              | 365  |              |
| Gross weight - AIO                              | 378  |              | 387  |              | 396  |              | 405  |              |
| Metal detector (aperture Ø 70 mm)               | Ceia N                                     | Lock Insight | Ceia N                                     | Lock Insight | Ceia N                                     | Lock Insight | Ceia N                                     | Lock Insight |
| Accuracy stainless steel 316L                   | 0,40 mm                                    | 0,50 mm      | 0,40 mm                                    | 0,50 mm      | 0,40 mm                                    | 0,50 mm      | 0,40 mm                                    | 0,50 mm      |
| Accuracy non-ferro                              | 0,30 mm                                    | 0,35 mm      | 0,30 mm                                    | 0,35 mm      | 0,30 mm                                    | 0,35 mm      | 0,30 mm                                    | 0,35 mm      |
| Accuracy ferro                                  | 0,25 mm                                    | 0,30 mm      | 0,25 mm                                    | 0,30 mm      | 0,25 mm                                    | 0,30 mm      | 0,25 mm                                    | 0,30 mm      |
| Capacity / Speed exemples* :                    | Tablets / hour                             |              | Tablets / hour                             |              | Tablets / hour                             |              | Tablets / hour                             |              |
| Round tablets Ø 5mm                             | 5 200 000                                  |              | 5 200 000                                  |              | 5 200 000                                  |              | 5 200 000                                  |              |
| Round tablets Ø 8mm                             | 2 800 000                                  |              | 2 800 000                                  |              | 2 800 000                                  |              | 2 800 000                                  |              |
| Round tablets Ø 13mm                            | 1 000 000                                  |              | 1 000 000                                  |              | 1 000 000                                  |              | 1 000 000                                  |              |
| Shaped tablets 10 mm x 4 mm                     | 2 500 000                                  |              | 2 500 000                                  |              | 2 500 000                                  |              | 2 500 000                                  |              |
| Shaped tablets 16 mm x 6 mm                     | 600 000                                    |              | 600 000                                    |              | 600 000                                    |              | 600 000                                    |              |

\* General information may vary depending on the exact shape of the product

## PHARMA TECHNOLOGY

Rue de la Maîtrise 11  
B-1400 Nivelles  
Belgium

Tel: +32 67 64 55 00 - Fax: +32 67 64 55 11

E-Mail: info@pharmatec.be - Web site: www.pharmatec.be